

HOTSCHEDULES RELEASE 4.0.53.1

Released 09.29.2016

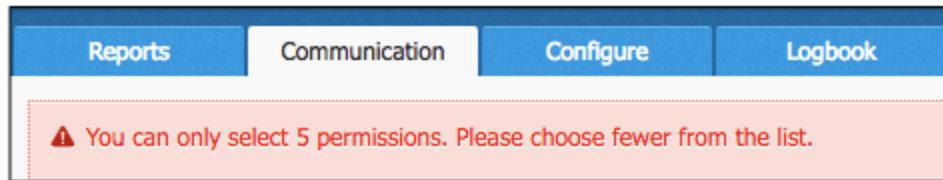
Table of Contents

New Features & Improvements Web	2
Assigning Surveys by Permission	2
New Scheduler - Opening the Add Shift Modal	2
New Scheduler - Scrolling Performance	2
New Scheduler - Smarter Labor Budget Filters	3
New Scheduler - Displaying the Skill Level Name on SmartSelect	3

New Features & Improvements | Web

Assigning Surveys by Permission

To maximize site-performance efficiency, ASC users are no longer able to configure Surveys to display for more than five permissions. If more than five are selected, users will receive a message informing them to modify their selection.



In instances of previously-created Surveys assigned to more than five permissions, users will be asked to reduce the amount of permissions the next time they edit them before re-publishing.

New Scheduler - Opening the Add Shift Modal

As with the Old Scheduler, typing a number when an active cell is selected will now display the Add Shift modal with that number being assigned to the start time of the shift. This behavior will work in ClassicView *and* SmartView.

New Scheduler - Scrolling Performance

Performance improvements have been made to the speed and fluidity of scrolling throughout the New Scheduler.

New Scheduler - Smarter Labor Budget Filters

Updates have been made to the filters for the Labor Budget KPI and its corresponding drivers (SPLH, GPLH Labor Percentage/Cost, and GL100) in the New Scheduler.

Group: Schedule	Filter	Mon, 9/26/16	Tue, 9/27/16	Wed, 9/28/16	Thu, 9/29/16	Fri, 9/30/16	Sat, 10/1/16	Sun, 10/2/16
Bartender								
Abbie White 16.50 / 16.50 \$16.50 Part-Time: 25.8	Partially Available 4:00p - 4:00a	Partially Available 2:15p - 4:00a	Partially Available 2:15p - 8:00p	Partially Available 4:00p - 4:00a	Partially Available 4:00p - 4:00a	Bartender 9:30a - 3:30p Bar 1	Bartender 9:30a - 3:30p Bar 1	Bartender 9:30a - 3:30p Bar 1
Barry Smith 20.25 / 20.25 \$101.25 Full-Time Hourly: 28.5			Partially Available 4:00p - 4:00a	Partially Available 4:00p - 4:00a				
Ellie Maye 5.50 / 5.50 \$48.40 Part-Time: 21.2	Partially Available 4:00a - 4:00p		Partially Available 4:00a - 4:00p		Bartender 10:30a - 4:00p Bar 2			
Erik Johnson 0 / 0 Part-Time: 23.1			Partially Available 11:00a - 4:00a			Partially Available 4:00a - 4:00p	Partially Available 4:00a - 4:00p	Partially Available 4:00a - 4:00p
Fred Hall 18.50 / 18.50 \$162.80 Full-Time Hourly: 23.4			Partially Available 4:00p - 5:00p		Partially Available 11:00a - 4:00a			Bartender 11:15a - 4:00p Bar 2
Gary Long 6.75 / 6.75 \$59.40 Part-Time: 22.2		Partially Available 4:00p - 4:00a	Partially Available 4:00p - 4:00a			Partially Available 4:00a - 4:00p	Partially Available 4:00p - 4:00a	Partially Available 4:00p - 4:00a
Gil Sampson 25.00 / 25.00 \$220.00 Part-Time: 21	Bartender 9:30a - 3:30p Bar 1				Partially Available 4:00a - 4:00p	Bartender 10:30a - 4:00p Bar 2	Partially Available 3:00p - 4:00a	Partially Available 3:00p - 4:00a
Gina Salazar 30.75 / 30.75 \$270.60 Part-Time: 26.4	Partially Available 4:00p - 4:00a	Partially Available 4:00p - 4:00a	Bartender 10:30a - 4:00p Bar 2	Partially Available 4:00a - 4:00p	Bartender 10:30a - 4:00p Bar 2			
<div style="display: flex; justify-content: space-between;"> House Shift Manager Schedule Summary Forecast Data Labor Budget Labor Volume HIDE </div>								
Labor Cost, USD								
Bartender								
Scheduled \$542.30	\$96.80	\$96.80	\$96.80	\$96.80	\$53.90	\$53.90	\$47.30	
Budgeted \$0.00	\$0.00	\$0.00	\$0.00	\$0.00	\$0.00	\$0.00	\$0.00	
Variance \$542.30	(\$96.80)	(\$96.80)	(\$96.80)	(\$96.80)	(\$53.90)	(\$53.90)	(\$47.30)	

Previously, filtering the schedule by Day Part grouped all KPI information for a shift that spans both Day Parts into one or the other, but now the logic will break the shift down, and place the data in the correct Day Part. For example, if a Day Part is 4:00pm - 4:00am, and a shift begins at 3:00pm and ends at 8:00pm, although the shift will appear on the employee's PM Day Part, the information found in the Labor Budget KPI will be based on each hour to give a more accurate report.

New Scheduler - Displaying the Skill Level Name on SmartSelect

To avoid confusion, the name of the Skill Level will appear in the New Scheduler's SmartSelect instead of the level itself. With the necessary permissions, Skill Levels can be configured in the Company sub-tab of the Settings tab.

Home
Settings
Messaging
Staff
Forecast
Scheduling
Logbook
Reporting

Personal
Preferences
Company
External Links

Change Skills

Skill Level Information

Skill levels

0	01	Edit
1	02	Edit
2	03	Edit
3	04 Do Not Schedule	Edit

Add New Skill level

Rank (number)

Name

Save Changes Cancel

Company Settings :: The Wiltern Theater - Los Angeles

Address

3790 Wilshire Blvd
Los Angeles
CA
90010

Schedules

[FOH] Barback*
[FOH] Bartender*
[FOH] Bottle Service*
[FOH] Catering*
[FOH] Cocktail*
[FOH] Concession*

Job Information

Bar Back
Bar Manager
Bartender
BeerTender
Bottle Service
Cashier

Skill Level Information Edit

01
02
03
04 Do Not Schedule