

HOTSCHEDULES RECRUIT RELEASE 1.50

Released 06.22.2016

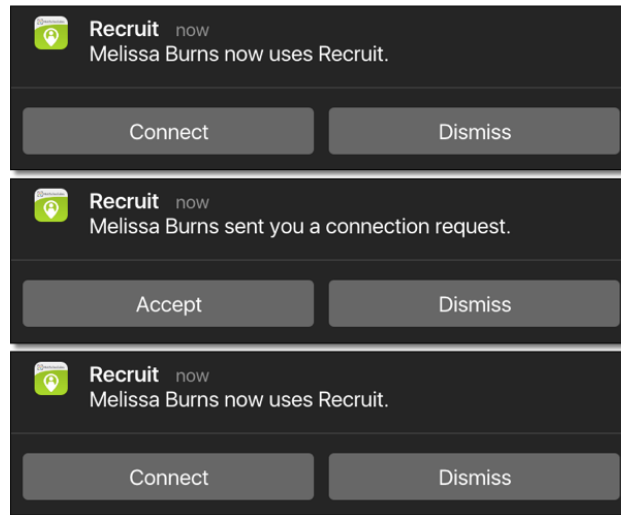
Table of Contents

New Features & Improvements Mobile	2
Applying for Jobs Through Banner Notifications	2
New Features & Improvements Web	2
Previously-Confirmed Emails	2
Updated Steps for HS Current Employees	3
Improved Error Message	4
Updated Drive-Through Job Type	4
Automatic Assigned Job Preferences	4
Per-Person Average and Restaurant Type Defaults	5

New Features & Improvements | Mobile

Applying for Jobs Through Banner Notifications

Depending on the scenario, users who have Banner notifications enabled for the Recruit app, will now have the ability to connect to the app, accept a Connection Request, or apply to a job directly from the notification.



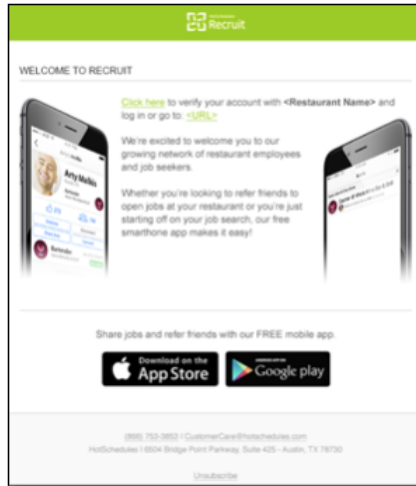
New Features & Improvements | Web

Previously-Confirmed Emails

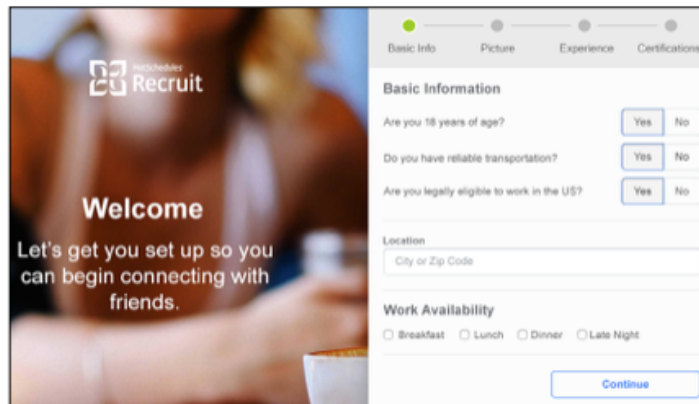
Emails that have already been confirmed in HotSchedules will not have to be re-confirmed if the user attempts to register for Recruit through HotSchedules.

Updated Steps for HS Current Employees

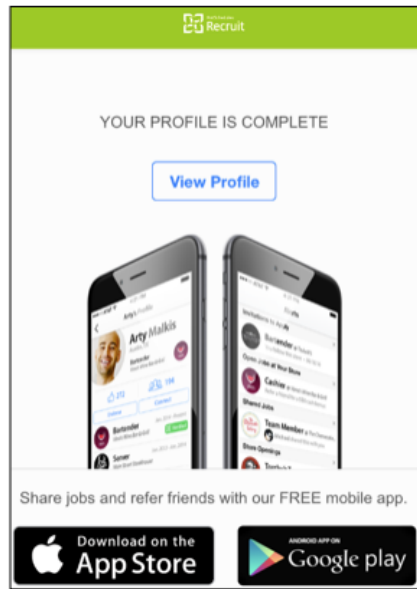
When current employees sign up for Recruit with their HotSchedules credentials, they will receive an email with a link to verify their email address if it hasn't already been confirmed through HotSchedules.



Once the email address is confirmed, employees can start setting up their Recruit profile.

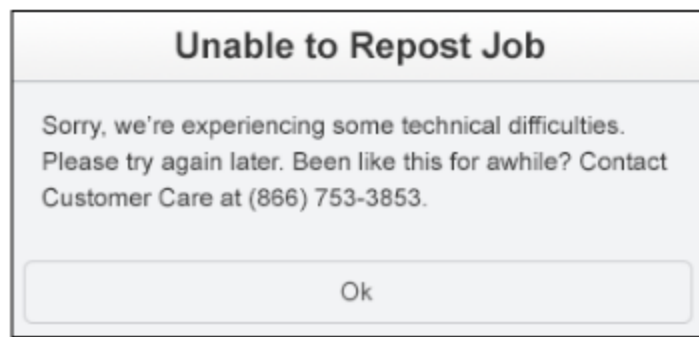


When the profile is complete, users will be presented with an opportunity to download the app, or to view their newly-created profile.



Improved Error Message

When managers are unable to post, or unpost, a Paid-Per-Applicant job due to integration issues with Jobs 2 Careers, they will receive a warning message, so they know to try again later, or to call the Customer Care team.



Updated Drive-Through Job Type

The spelling has been updated to "Drive-Thru" throughout the site.

Automatic Assigned Job Preferences

Recruit will now run a basic keyword search of saved work history for HotSchedules users to update new users' Job Preferences. For example, users with the words "bar" and "bartender" will have their Job Preference updated to include the "Bartender" preference.

Per-Person Average and Restaurant Type Defaults

The defaults for Per-Person Average and Restaurant Type for new stores being claimed has been updated “\$\$” and “Casual Dining.”

Per Person Average	Store Type
\$\$(\$11-\$30) ▼	Casual Dining ▼