

HotSchedules Release 4.0.58.2

Released 05.11.2017

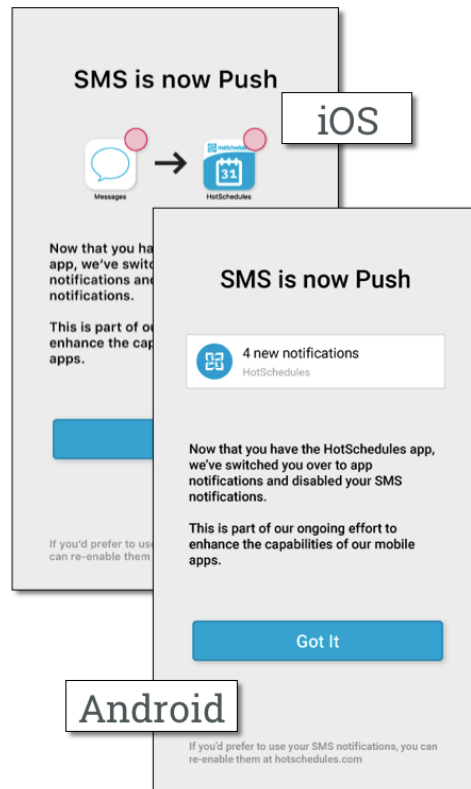
Table of Contents

New Features & Improvements Mobile	2
Unsubscribing SMS in Favor of Push Notifications	2
Android's My Schedule Screen	3
New Features & Improvements Web	3
Shift Swaps with Minor Rules	3
Scheduling - Shift Guides for Minor Rules	3
Forecasting - Revenue Center Terminology Change	4
Forecasting - Labor Rule Additivity	4

New Features & Improvements | Mobile

Unsubscribing SMS in Favor of Push Notifications

Because the iOS and Android apps have push notifications, new app users who have SMS enabled on their accounts, and all other users who have SMS enabled and have not logged into their apps for over a year will receive a preload upon logging into their apps informing them their SMS has been deactivated.



If users wish to continue using SMS as a means of notifying them of account activity, they will need to re-enable it through the web application. Existing app users who receive both push notifications and SMS will continue to receive both communication types.

Android's My Schedule Screen

Improvements have been made to the Android app's My Schedule screen to match the iOS interface. Users no longer have to select a week to view its schedule, since they can now simply scroll through the weeks of schedules.

New Features & Improvements | Web

Shift Swaps with Minor Rules

To avoid Minor Rule violations, minors are unable to initiate shift swaps or view released shifts that would cause the violation. Furthermore, other employees are not able to initiate shift swaps that would violate the Minor Rules with a minor either.

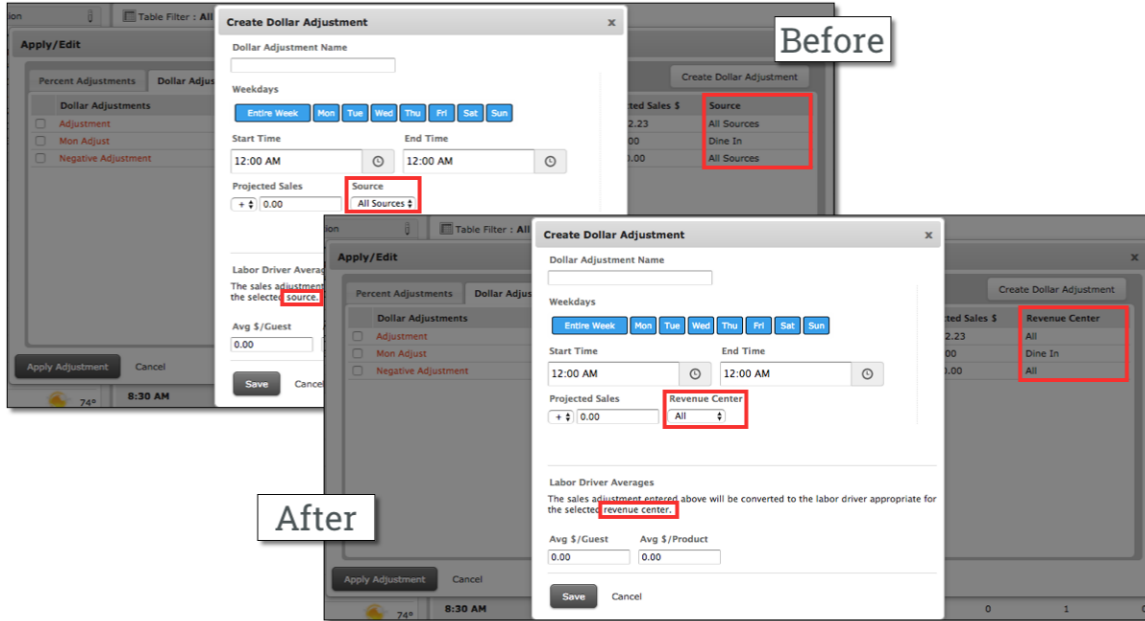
Scheduling - Shift Guides for Minor Rules

With the addition of being able to configure Minor Rules at the ASC level in the 4.0.58.1 Release (04.27.2017), store-level managers can now view shift guides in the Scheduler for acceptable times minors can be scheduled. Times not available based on minor rules will be highlighted in pink in both the Add Shift modal as well as on the SmartView. Hovering the mouse over the area will reveal the exact times the minor should not be scheduled.

The screenshot displays two overlapping interface elements. The top element is the 'Add Shift - Barry Allen - Tue, 5/2/17' modal, which shows a calendar grid for Tuesday, 5/2/17. A blue tooltip indicates a 'Minor Unavailable 11:45p - 7:00a' period. The bottom element is the SmartView for Barry Allen, showing a shift guide for Friday, 5/5/17. A blue tooltip indicates a 'Minor Unavailable 11:45p - 5:00a' period. The modal also includes a 'Start:' input field, an 'Add another shift' button, and 'Save' and 'Cancel' buttons.

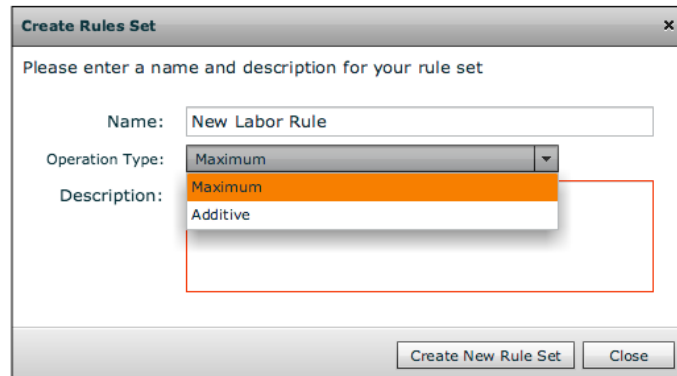
Forecasting - Revenue Center Terminology Change

To align forecast terminology across all screens, "Source" has been changed to "Revenue Center" for all sites not specifically configured to use the original term when creating Dollar Adjustments.



Forecasting - Labor Rule Additivity

ASC users now have the option to make their Labor Rule Sets Additive or Maximum.



The current default behavior is to review all Labor Rules within a set, and take the maximum number of jobs for each interval of time. In other words, if there are two Labor Rules to create Server shifts, and one rule states 2 Servers are required for 10:00am, and another rule states 1 Server is needed for the same time, only 2 will be created.

When Additive is selected, all the jobs from each Labor Rule within that set will be added for each interval of time, so in the example above, 3 Server shifts will be created for 10:00am.